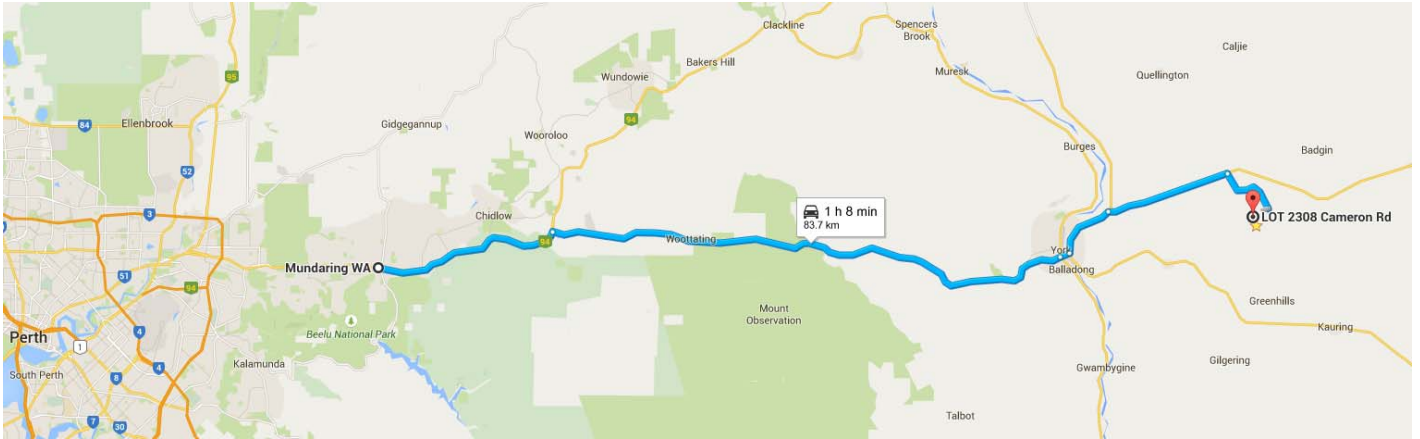
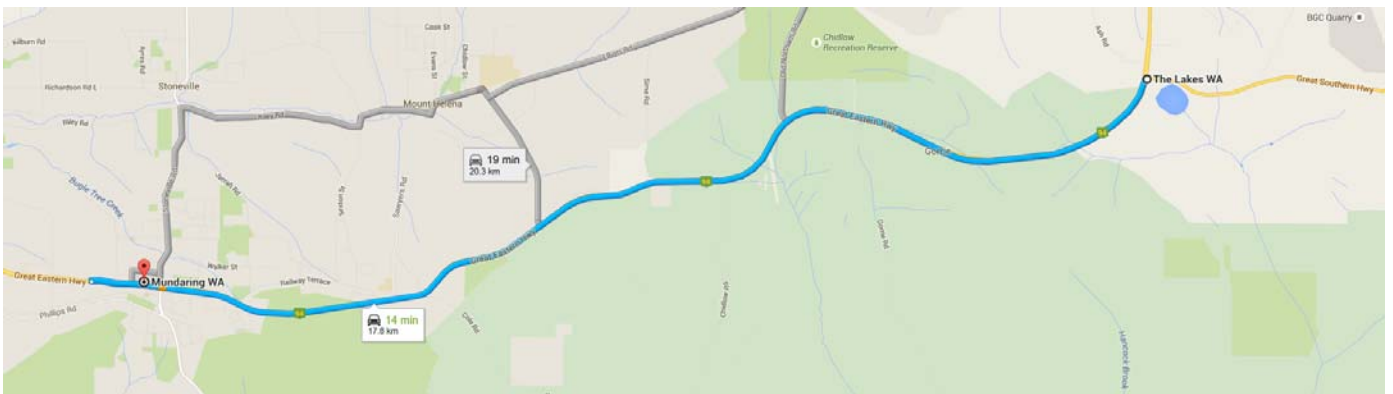


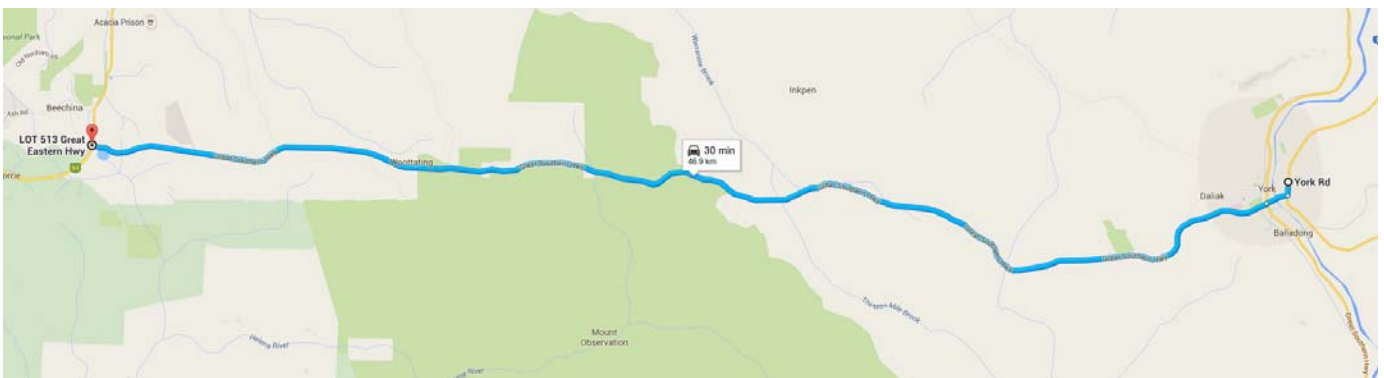
White Gum Air Park (YWGM) is located approximately 15 kilometres to the west of York.

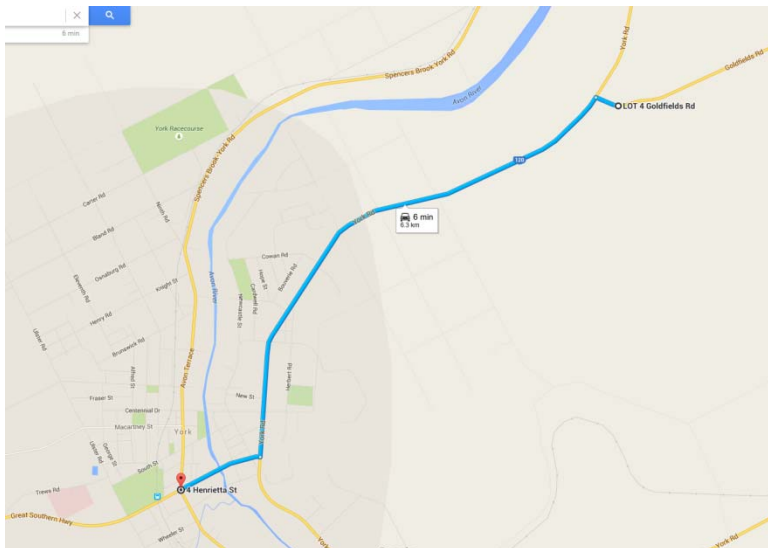


From Perth, travel along Great Eastern Highway through Mundaring for approximately 18 kilometres to The Lakes. Turn right onto Great Southern Highway.



Continue on great Southern Highway for approximately 46 kilometres.



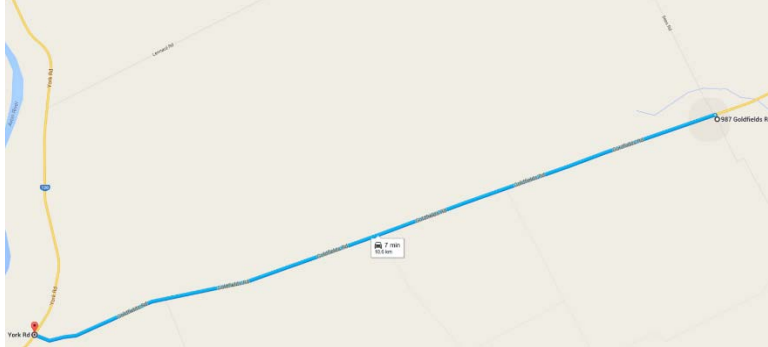


Pass the turn off to York township on your left and continue across the bridge.

Turn left at the T junction onto York Road.



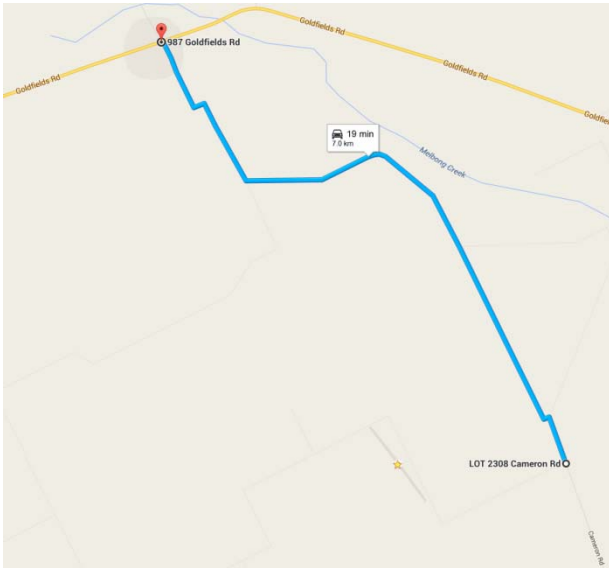
Continue for approximately 6 kilometres, at the sign for Tammin and Meckering, turn right onto Goldfields Road.



Continue on Goldfields Road for approximately 10 kilometres.

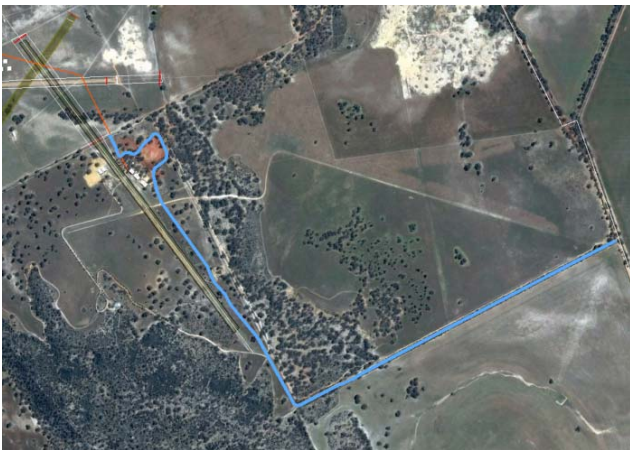


Turn right onto Cameron Road (This is a gravel road).



Continue on the gravel road, (Cameron Road) for 7 kilometers.

Entrance to White Gum Air Park is through the White Gum Farm/Aviation gate on your right.



Continue on the drive way for 1.4 kilometres.

Turn right 90 degrees and follow for another kilometre.



Walk through the Bar and Grill garden area.

Car Park.